

sunbury
design



Vintage FR Faux Suede





Vintage Satin 3910



Vintage Champagne 3904



Vintage Allspice 3901



Vintage Copper 3905



Vintage Brandy 3903



Vintage Thorn 3912

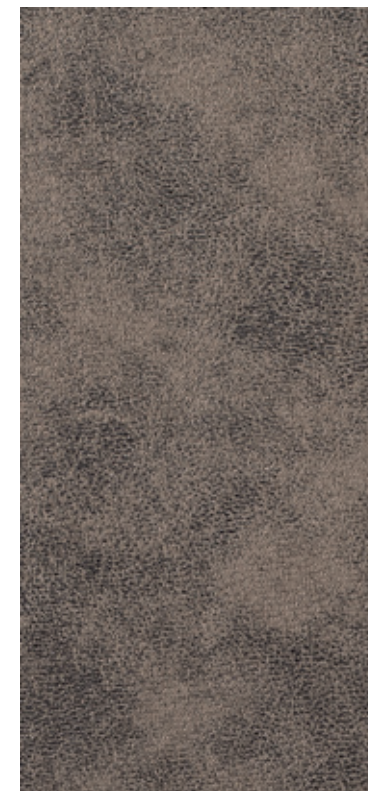
visit www.sunburydesign.com/collections/vintage to see images of these fabrics



Vintage Aberdeen 3902



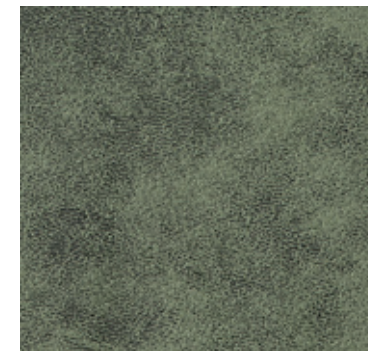
Vintage Tabasco 3911



Vintage Graphite 3908



Vintage Goldmine 3907



Vintage Fern 3906



Vintage Rosy 3909

visit www.sunburydesign.com/collections/vintage to see images of these fabrics

General Specification.

Quality.	Vintage FR Faux Suede
Composition.	100% P, halogen free FR treated
Weight.	520gsm / 15.34oz/yd ²
Durability.	130 000 rubs
Width.	140cm / 55in +/-
Flammability.	FR back-coated meeting: BS EN 1021-1, BS EN 1021-2, BS 7176 Medium Hazard (all over CMHR 35 foam) IMO part 8, CAL 117, NFPA 260
Application.	SUITABLE FOR SEVERE CONTRACT/HOSPITALITY UPHOLSTERY
Maintenance.	Vintage includes Evergclean+ soil and antiviral treatment, please refer to our CARE GUIDE EP for full care & cleaning details, available online or by request.
Special colours.	Custom colours can be produced, minimum order may apply. Please contact us for further information.
Environmental.	REACH compliant, halogen free, OEKO TEX Standard 100.

In accordance with normal trade practice batch to batch variations may occur within commercial tolerances. Samples shown on this card are a guide and current production may differ marginally. We reserve the right to alter specifications without notice. FR testing is predictive and customers must ensure their complete furniture meets the necessary standards. All values and measurements are approximate



**sunbury
design**

SUNBURY DESIGN Head Office & Showroom.
Lewis & Co (Fabrics) Ltd, Sunbury House, Lovet Road,
Harlow, Essex CM19 5TB United Kingdom
Telephone +44 (0)1279 416060

Northern Branch Lewis & Co (Fabrics) Ltd. 5 Faraday Close,
Pattinson North Ind. Est, Washington, Tyne & Wear NE38 8QA
Telephone (0191) 419 2234

sales@sunburydesign.com
sunburydesign.com

