

sunbury
design



Icon FR Velvet





Icon Waterfall 3821



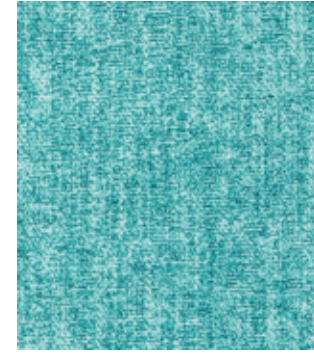
Icon Iceberg 3808



Icon Galileo 3806



Icon Cassini 3803



Icon Powder Blue 3816



Icon Yale 3823



Icon Marble 3810



Icon Zinc 3824



Icon Nightingale 3814



Icon Mystery 3812



Icon Drake 3804



Icon Vegas 3820

visit www.sunburydesign.com/collections/icon to see images of these fabrics



Icon Drambuie 3805



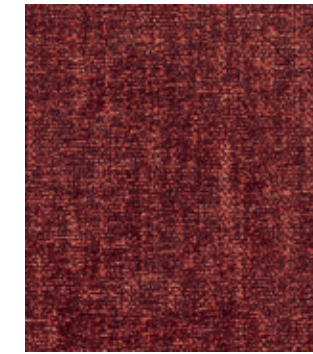
Icon Rye 3817



Icon Seashell 3818



Icon Nebula 3813



Icon Bloodstone 3801



Icon Moccasin 3811



Icon Candyfloss 3802



Icon Whiskey 3822



Icon Kabuki 3809



Icon Straw 3819



Icon Ophelia 3815



Icon Gemstone 3807

visit www.sunburydesign.com/collections/icon to see images of these fabrics

General Specification.

Quality.	Icon FR Velvet
Composition.	100% P, halogen free FR treated
Weight.	512gsm / 15.10oz/yd ²
Durability.	60 000 rubs
Width.	140cm / 55in +/-
Flammability.	FR back-coated meeting: BS EN 1021-1, BS EN 1021-2, BS 7176 Medium Hazard (all over CMHR 35 foam) IMO part 8, CAL 117, NFPA 260
Application.	SUITABLE FOR SEVERE CONTRACT/HOSPITALITY UPHOLSTERY
Maintenance.	Icon includes Evergclean+ soil and antiviral treatment, please refer to our CARE GUIDE EP for full care & cleaning details, available online or by request.
Special colours.	Custom colours can be produced, minimum order may apply. Please contact us for further information.
Environmental.	REACH compliant, halogen free, OEKO TEX Standard 100.

In accordance with normal trade practice batch to batch variations may occur within commercial tolerances. Samples shown on this card are a guide and current production may differ marginally. We reserve the right to alter specifications without notice. FR testing is predictive and customers must ensure their complete furniture meets the necessary standards. All values and measurements are approximate



sunbury
design

SUNBURY DESIGN Head Office & Showroom.
Lewis & Co (Fabrics) Ltd, Sunbury House, Lovet Road,
Harlow, Essex CM19 5TB United Kingdom
Telephone +44 (0)1279 416060

Northern Branch Lewis & Co (Fabrics) Ltd. 5 Faraday Close,
Pattinson North Ind. Est, Washington, Tyne & Wear NE38 8QA
Telephone (0191) 419 2234

sales@sunburydesign.com
sunburydesign.com

