

sunbury
design

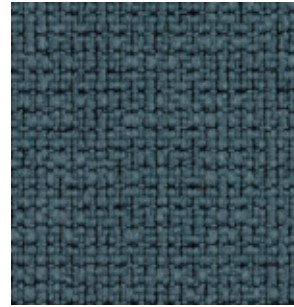


Bathurst & Hesketh

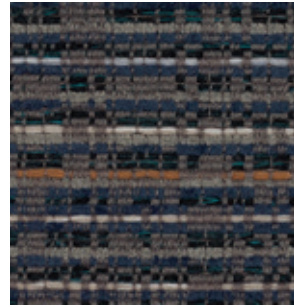




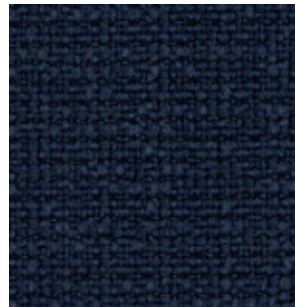
Bathurst Regalia 2809



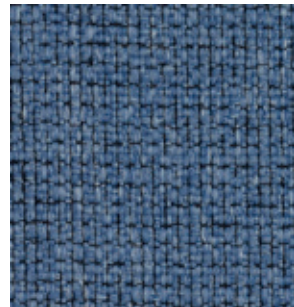
Hesketh Swiss 2826



Bathurst Havana 2805



Hesketh Seaspray 2821



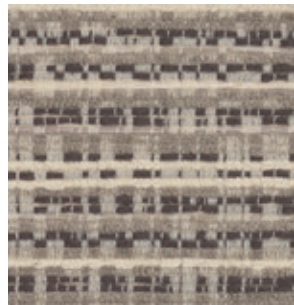
Hesketh Caprice 2810



Hesketh Silver 2822



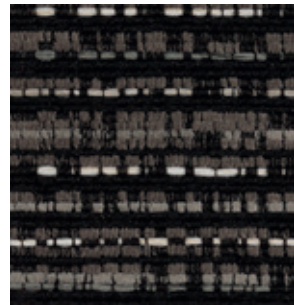
Hesketh Storm 2824



Bathurst Linen 2806



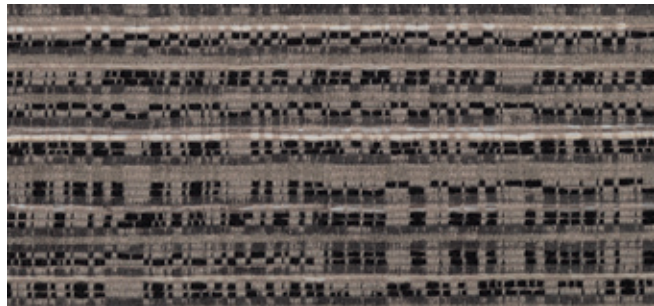
Hesketh Latte 2816



Bathurst Reckless 2808



Hesketh Stealth 2823

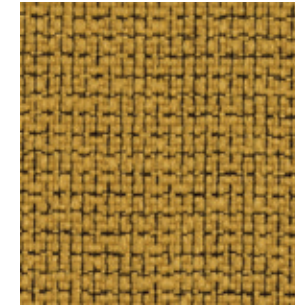


Bathurst Nursery 2807



Hesketh Cobble 2811

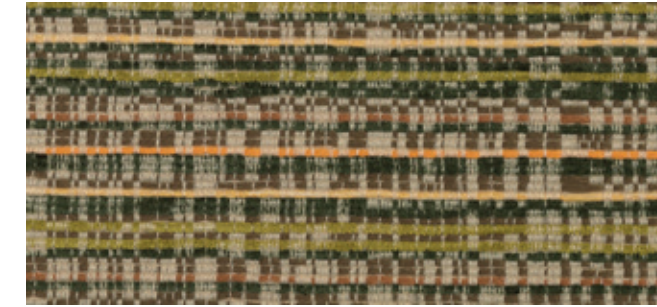
visit www.sunburydesign.com/collections/bathurst-hesketh to see images of these fabrics



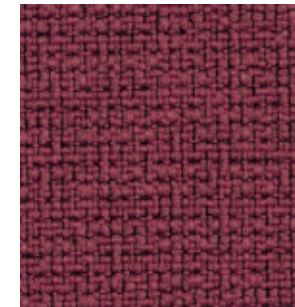
Hesketh Sunglow 2825



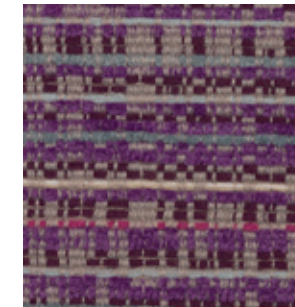
Hesketh Highland 2813



Bathurst Fleur 2804



Hesketh Primrose 2819



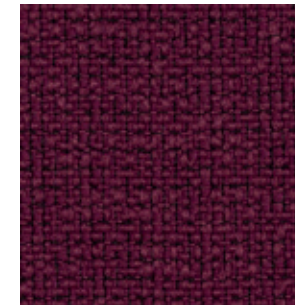
Bathurst Confetti 2803



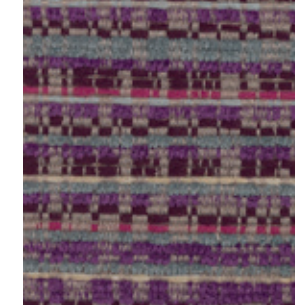
Hesketh Kernel 2815



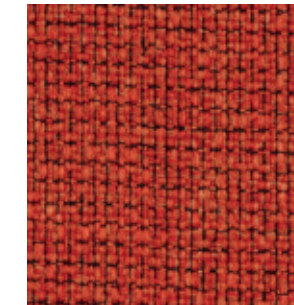
Hesketh Oatmeal 2818



Hesketh Jolt 2814



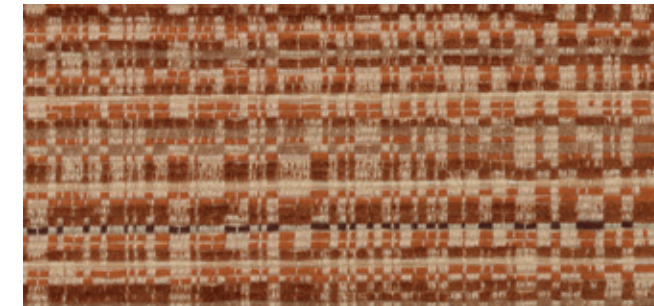
Bathurst Nepal 2817



Bathurst Bud 2801



Hesketh Cognac 2812



Bathurst Castan 2802



Hesketh Rust 2820

visit www.sunburydesign.com/collections/bathurst-hesketh to see images of these fabrics

General Specification.

Quality.	Bathurst & Hesketh
Composition.	100% P, halogen free FR treated
Weight.	Bathurst - 533gsm / 15.72oz/yd ² Hesketh - 571gsm / 16.84oz/yd ²
Durability.	Bathurst - 45 000 rubs Hesketh - +50 000 rubs
Width.	140cm / 55in +/-
Flammability.	FR back-coated meeting: BS EN 1021-1, BS EN 1021-2, BS 7176 Medium Hazard (all over CMHR 35 foam) IMO part 8, CAL 117, NFPA 260
Application.	SUITABLE FOR SEVERE CONTRACT/HOSPITALITY UPHOLSTERY
Maintenance.	Bathurst & Hesketh includes Everclean+ soil and antiviral treatment, please refer to our CARE GUIDE EP for full care & cleaning details, available online or by request.
Special colours.	Custom colours can be produced, minimum order may apply. Please contact us for further information.
Environmental.	REACH compliant, halogen free, OEKO TEX Standard 100.

In accordance with normal trade practice batch to batch variations may occur within commercial tolerances. Samples shown on this card are a guide and current production may differ marginally. We reserve the right to alter specifications without notice. FR testing is predictive and customers must ensure their complete furniture meets the necessary standards. All values and measurements are approximate



sunbury
design

SUNBURY DESIGN Head Office & Showroom.
Lewis & Co (Fabrics) Ltd, Sunbury House, Lovet Road,
Harlow, Essex CM19 5TB United Kingdom
Telephone +44 (0)1279 416060

Northern Branch Lewis & Co (Fabrics) Ltd. 5 Faraday Close,
Pattinson North Ind. Est, Washington, Tyne & Wear NE38 8QA
Telephone (0191) 419 2234

sales@sunburydesign.com
sunburydesign.com

